

SUWANNEE RIVER - MCGRIFF PASS DIXIE & LEVY COUNTY, FL HYDROGRAPHIC EXAM SURVEY FY19 6-FOOT PROJECT

SURVEY NOTES

- REFER TO SURVEY NO. 19-045.
- SOUNDINGS ARE IN FEET AND TENTHS AND REFER TO NOAA'S REPORTED MEAN LOWER LOW WATER (MLLW) OF THE 1983-2001 TIDAL EPOCH.
- TIDAL REDUCTIONS WERE OBTAINED UTILIZING A REAL-TIME KINEMATIC (RTK) GPS AND REFERENCED TO MLLW UTILIZING A HYPACK KINEMATIC TIDE DATUM (KTD) MODEL. KTD FILE NAME: "SPC-FL-WEST-2010-12-07.KTD".
- ALL ELEVATIONS ARE BELOW THE CHART DATUM UNLESS PRECEDED BY A (+) SIGN.
- PLANE COORDINATES ARE BASED ON THE TRANSVERSE MERCATOR PROJECTION FOR THE WEST ZONE OF FLORIDA AND REFERENCED TO THE CURRENT REALIZATION OF THE NORTH AMERICAN DATUM OF 1983 (NAD83), BASED ON THE NOAA NATIONAL SPATIAL REFERENCE SYSTEM (NSRS).
- ALL STATIONING REFERS TO THE CENTERLINE OF THE CHANNEL.
- THIS SURVEY WAS PERFORMED USING REAL-TIME KINEMATIC (RTK) GPS POSITIONING WITH THE FOLLOWING REFERENCE BASE LOCATION:
REFERENCE BASE LOCATED AT "SUWANNEE 1" (PID: BFB75)
- DEPTHS DEPICTED BY THIS SURVEY ARE REFERENCED TO MLLW, TIDAL EPOCH 1983-2001 AS REPORTED BY THE NATIONAL OCEANIC AND ATMOSPHERIC ADMINISTRATION (NOAA). A MODIFIED VERSION OF NOAA'S VDUTUM MODEL WAS USED TO CALIBRATE TO THE PUBLISHED MLLW HEIGHT OF THE BENCHMARK BELOW:
NOAA TIDAL STATION 872-7577 USED FOR ALL CUTS. (PID: AR1597)
VERTICAL MEASUREMENTS WERE MADE USING A ROSS SMART SOUNDER 835 SINGLE-BEAM TRANSDUCER OPERATING AT 200 KHZ (HIGH FREQUENCY). ALL SOUNDINGS SHOWN ARE IN HIGH FREQUENCY.
- VESSEL: SB-50 DATE OF SURVEY: 13-14 NOV 2018 CUT: CUTS 1-11
- AIDS TO NAVIGATION WERE LOCATED DURING THIS SURVEY.
- THE INFORMATION DEPICTED ON THIS MAP REPRESENTS THE RESULTS OF SURVEYS MADE ON THE DATES INDICATED ABOVE AND CAN ONLY BE CONSIDERED AS INDICATING THE GENERAL CONDITIONS AT THAT TIME. THIS CHART IS SOLELY FOR THE DISTRIBUTION OF AVAILABLE DEPTHS AT THE TIME OF THE SURVEY.
- SURVEY ACCURACY PERFORMANCE STANDARDS, QUALITY CONTROL, AND QUALITY ASSURANCE REQUIREMENTS WERE FOLLOWED DURING THIS SURVEY IN ACCORDANCE WITH USACE EM 1110-2-1003, HYDROGRAPHIC SURVEYING, 30 NOV 13.

LEGEND	
	MONUMENT
	LIGHTED BEACON
	GREEN DAYBEACON
	RED DAYBEACON
	RED LIGHTED BUOY
	GREEN LIGHTED BUOY
	CAN BUOY
	NUN BUOY
	TIDE STAFF
	PROJECT DEPTH

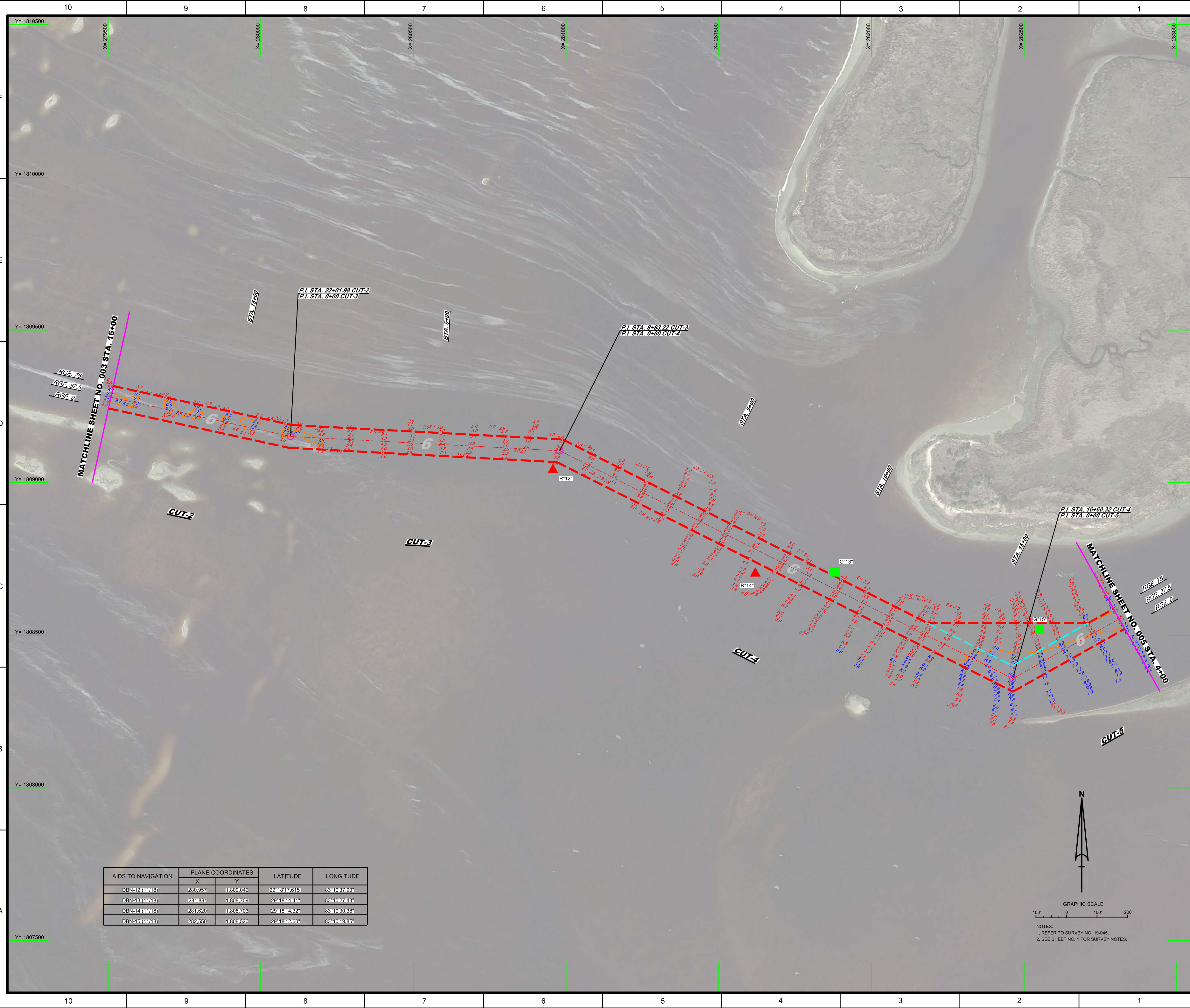
US Army Corps of Engineers
Jacksonville District
SAFETY ON THIS JOB DEPENDS ON YOU

DEPARTMENT OF THE ARMY
JACKSONVILLE DISTRICT, CORPS OF ENGINEERS
JACKSONVILLE, FLORIDA

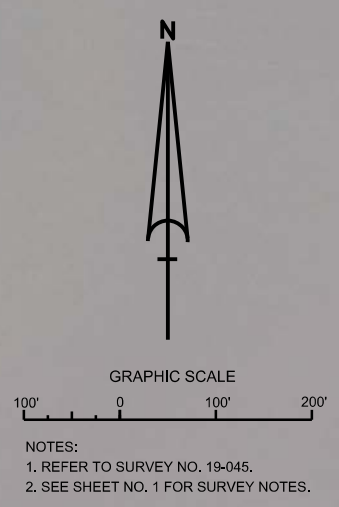
Checked by: GHR
Designed by: WRM
Drawn by: WRM
File Name: NOV 2018
Reference File: 19-045-19-045.DGN
File Name: 19-045-19-045.DGN

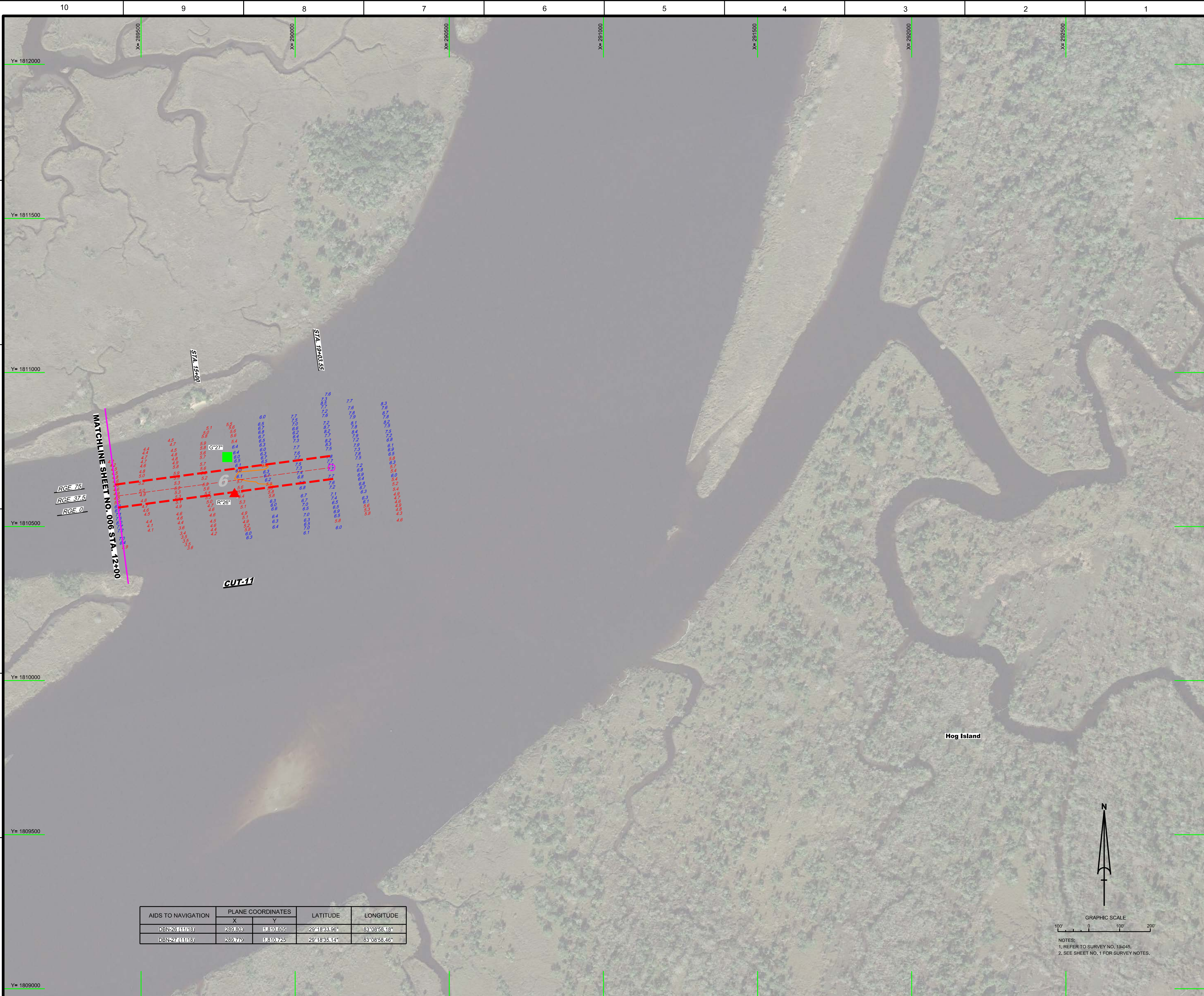
SUWANNEE RIVER - MCGRIFF'S PASS
DIXIE AND LEVY COUNTY, FLORIDA
**HYDROGRAPHIC EXAM SURVEY FY19
6-FOOT PROJECT**
INDEX, LOCATION AND VICINITY MAP

Scale: AS SHOWN
Drawing no. **1**
SHEET 01 OF 07



AIDS TO NAVIGATION	PLANE COORDINATES		LATITUDE	LONGITUDE
	X	Y		
DBN-12 (11/18)	280.957	1.809.042	29°18'17.615"	83°10'37.90"
DBN-13 (11/18)	281.881	1.808.709	29°18'14.411"	83°10'27.45"
DBN-14 (11/18)	281.620	1.808.703	29°18'14.321"	83°10'30.38"
DBN-15 (11/18)	282.550	1.808.520	29°18'12.601"	83°10'19.85"





US Army Corps of Engineers
Jacksonville District

SAFETY ON THIS JOB
DEPENDS ON YOU

No.	Symbol	Zone

DEPARTMENT OF THE ARMY
JACKSONVILLE DISTRICT, CORPS OF ENGINEERS
JACKSONVILLE, FLORIDA

Checked By: GHR
 Designed By: WRM
 Drawn By: WRM
 File No.: MGRIFTS-PASS-SHAWN.DGN
 Date: NOV 2018
 Reference File: MGRIFTS-PASS-SHAWN.DGN
 File Name: 19-03-05-CUT-11

HYDROGRAPHIC EXAM SURVEY FY19
6-FOOT PROJECT
STA. 12+00 THRU STA. 19+03.55 CUT-11
PLAN

SUWANNEE RIVER - MGRIFTS PASS
DIXIE AND LEVY COUNTY, FLORIDA

AIDS TO NAVIGATION	PLANE COORDINATES		LATITUDE	LONGITUDE
	X	Y		
DBN26 (11718)	289,803	1,810,605	29°18'33.96"	83°08'58.18"
DBN27 (11716)	289,779	1,810,725	29°18'35.14"	83°08'58.46"

Scale: AS SHOWN

Drawing no.
7

SHEET 07 OF 07

NOTES:
1. REFER TO SURVEY NO. 19-045.
2. SEE SHEET NO. 1 FOR SURVEY NOTES.